

# PROTEC PROSICON® EPS 600

## High Temp Masking Silicone Flat Caps



**YOUR PROSICON® PRODUCT ADVANTAGE. BEST PRICE PERFORMANCE IN THE MARKET.**

### HIGH TEMPERATURE MASKING SILICONE FLAT CAPS.

Ideal for large diameters as well as long smooth axles and threaded bolts.

Ergonomic top makes it easier to put on and take off.  
Recommended for Powder coating, e-coating, plating & anodizing.

### PREMIUM SILICONE MATERIAL PROPERTIES.

Prosicon® Silicone rubber 55 shore A withstands temperatures up to max. 316 ° C / 4 hours. On request also in EPDM material up to max. 177 ° C available.

### PROSICON® BLU SIGNATURE® PRODUCT CODE.

Premium. Reusable. Stabilized with Special Blends.

### COLOR OPTIONS.

Special color runs available on request.

### TECHNICAL CLEANLINESS FOR ACCURATE MASKING.

Prosicon® Silicone Maskign Caps and Plugs are stabilized and tempered separately. This process improves dimensional stability and prevents plasticizer exudation during customer applications under high temperature conditions.

### PREMIUM SILICONE MATERIAL PROPERTIES.

Prosicon® Silicone Maskign Caps and Plugs have an excellent resistance to high temperature, chemicals and acids and can be used several times without loss of quality.

**HEAT RESISTANT!**

### MATERIALS SELECTION GUIDE.

EPDM rubber, Neoprene, NBR rubber, SBR, TPE, ecc.

### APPLICATION.

High Temperature Masking Caps and Plugs to protect your product during finishing processes like powder coating, KTL, Wet painting, anodizing, electroplating and e.coating treatments. Extremely temperature resistant up to 316° C, robust, versatile and time-saving in application.

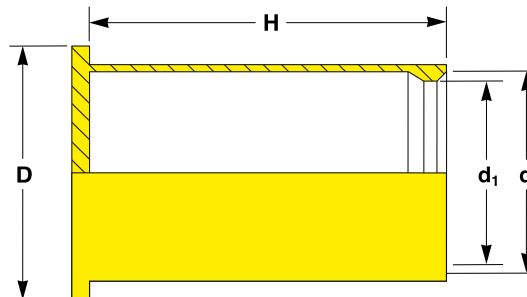
### SILICONE / EPDM CUSTOM DESIGN AT RECORD SPEED.

On request we develop and produce individually tailored solutions along with the standard items of this range: If you require additional dimensions, different materials and new colours. We would be pleased to assist you.

- |                    |   |
|--------------------|---|
| <b>Customized.</b> | For your special application                    |
| <b>Time Saver.</b> | Rapid Prototyping & Hi-Speed functional samples |
| <b>Hi-Speed.</b>   | Fast Lane Serial Mold Construction              |
| <b>Unbeatable.</b> | At the best price in the market                 |

# PROTEC PROSICON® EPS 600

## High Temp Masking Silicone Flat Caps



### DIMENSIONS

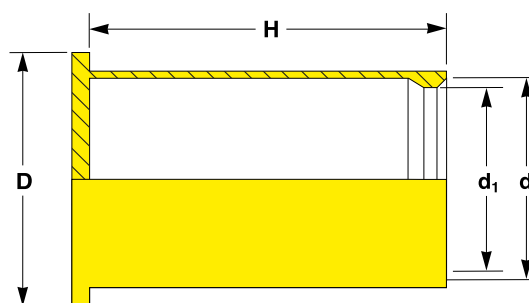
All dimensions in mm

Dimensions				Standard Pack	Reference No.
d	D	d <sub>1</sub>	H		
6.35	16.51	3.18	50.80	250	EPS 600 / 0125-2000
6.60	16.76	3.43	29.97	500	EPS 600 / 0135-1180
7.14	17.30	3.96	50.80	250	EPS 600 / 0156-2000
7.16	17.32	3.99	29.97	500	EPS 600 / 0157-1180
7.37	17.53	4.19	25.81	500	EPS 600 / 0165-1016
7.67	17.83	4.50	29.97	500	EPS 600 / 0177-1180
7.75	17.91	4.57	50.80	250	EPS 600 / 0180-2000
7.92	18.08	4.75	34.98	500	EPS 600 / 0187-1377
7.92	18.08	4.75	44.37	250	EPS 600 / 0187-1747
9.12	19.28	5.94	50.80	250	EPS 600 / 0234-2000
9.17	19.33	5.99	29.97	250	EPS 600 / 0236-1180
9.40	15.80	5.00	37.00	500	EPS 600 / 0197-1180
9.65	19.81	6.48	23.11	250	EPS 600 / 0255-0910
9.65	19.81	6.48	29.97	250	EPS 600 / 0255-1180
10.03	20.19	6.86	30.48	250	EPS 600 / 0270-1200
10.16	20.32	6.99	29.97	250	EPS 600 / 0275-1180
10.64	20.80	7.47	33.78	250	EPS 600 / 0294-1330
11.18	21.34	8.00	24.74	250	EPS 600 / 0315-0974
11.18	21.34	8.00	29.97	250	EPS 600 / 0315-1180
11.18	21.34	8.00	36.20	250	EPS 600 / 0315-1425
11.30	21.46	8.13	17.02	250	EPS 600 / 0320-0670
11.56	21.72	8.38	38.10	250	EPS 600 / 0330-1500
12.19	22.35	9.02	38.10	250	EPS 600 / 0355-1500
12.32	22.48	9.14	25.40	250	EPS 600 / 0360-1000
12.70	22.86	9.53	25.40	250	EPS 600 / 0375-1000
12.70	22.86	9.53	36.09	250	EPS 600 / 0375-1421

Should your requirements not be shown please ask for a separate quotation.  
 PROTEC products and specifications are subject to improvement and change without notice.

# PROTEC PROSICON® EPS 600

## High Temperature Masking Silicone Flat Caps



### DIMENSIONS

All dimensions in mm

Dimensions				Standard Pack	Reference No.
d	D	d <sub>1</sub>	H		
12.83	22.99	9.65	25.40	250	EPS 600 / 0380-1000
13.18	23.34	10.01	29.97	250	EPS 600 / 0394-1180
14.17	24.33	11.00	29.97	250	EPS 600 / 0433-1180
14.30	24.46	11.13	24.13	250	EPS 600 / 0438-0950
14.63	24.79	11.46	30.86	250	EPS 600 / 0451-1215
14.63	24.79	11.46	50.80	250	EPS 600 / 0451-2000
15.49	25.65	12.32	12.70	250	EPS 600 / 0485-0500
15.49	25.65	12.32	19.05	250	EPS 600 / 0485-0750
15.49	25.65	12.32	25.73	250	EPS 600 / 0485-1013
16.12	26.29	12.32	40.64	250	EPS 600 / 0485-1600
15.67	25.83	12.50	29.97	250	EPS 600 / 0492-1180
16.66	26.82	13.49	29.97	100	EPS 600 / 0531-1180
18.06	28.22	14.88	13.00	250	EPS 600 / 0586-0512
18.08	28.24	14.91	9.50	250	EPS 600 / 0587-0374
18.40	28.56	18.40	85.10	50	EPS 600 / 0725-3120
18.62	28.78	15.44	12.52	250	EPS 600 / 0608-0493
18.62	28.78	15.44	25.15	250	EPS 600 / 0608-0990
18.62	28.78	15.44	29.97	100	EPS 600 / 0608-1180
18.97	29.13	15.80	29.97	100	EPS 600 / 0622-1180
18.97	29.13	15.80	40.01	100	EPS 600 / 0622-1575
20.62	30.78	17.45	29.97	100	EPS 600 / 0687-1180
20.68	30.84	17.50	90.91	50	EPS 600 / 0689-3579
21.59	30.96	18.42	38.10	50	EPS 600 / 0725-1500
24.77	34.93	21.59	10.41	100	EPS 600 / 0850-0410
26.19	36.35	23.01	88.90	50	EPS 600 / 0906-3500
27.64	37.80	24.46	76.20	50	EPS 600 / 0963-3000

Should your requirements not be shown please ask for a separate quotation.  
 PROTEC products and specifications are subject to improvement and change without notice.

# PROTEC PROSICON® EPS 600

## High Temperature Masking Silicone Flat Caps



**HEAT RESISTANT!**

### DIMENSIONS

All dimensions in mm

Dimensions				Standard Pack	Reference No.
d	D	d <sub>1</sub>	H		
28.07	38.23	24.89	38.10	50	EPS 600 / 0980-1500
26.90	38.00	24.90	42.00	50	EPS 600 / 0980-1654
31.57	41.73	28.40	13.72	100	EPS 600 / 1118-0540
31.75	41.91	28.58	127.00	50	EPS 600 / 1125-5000
34.42	44.58	31.24	127.00	50	EPS 600 / 1230-5000
34.67	44.83	31.50	44.70	50	EPS 600 / 1240-1760
35.89	46.05	32.72	104.85	25	EPS 600 / 1288-4128
42.98	53.14	39.80	38.53	50	EPS 600 / 1567-1517
50.17	60.33	46.99	46.99	50	EPS 600 / 1850-1850
51.97	62.13	48.79	40.01	50	EPS 600 / 1921-1575
60.17	70.33	57.00	46.00	25	EPS 600 / 2244-1811
60.33	70.49	57.15	48.77	25	EPS 600 / 2250-1920
66.68	76.84	63.50	61.47	25	EPS 600 / 2500-2420
70.74	80.90	67.56	18.44	25	EPS 600 / 2660-0726
74.30	84.40	69.90	69.60	25	EPS 600 / 2750-2670
79.38	89.00	76.20	74.17	25	EPS 600 / 3000-2920
83.29	92.68	80.11	18.54	25	EPS 600 / 3154-0730
84.18	94.34	81.00	10.49	25	EPS 600 / 3189-0413
84.46	94.62	81.28	25.30	25	EPS 600 / 3200-0996
85.67	95.83	82.50	19.89	25	EPS 600 / 3248-0783
86.66	96.82	83.49	17.30	25	EPS 600 / 3287-0681
88.57	98.73	85.39	6.50	25	EPS 600 / 3362-0256
90.17	100.33	87.00	17.91	25	EPS 600 / 3425-0705
91.19	101.35	88.01	20.80	25	EPS 600 / 3465-0819
92.08	102.24	88.90	86.87	25	EPS 600 / 3500-3420
95.17	105.33	92.00	16.79	25	EPS 600 / 3622-0661

Should your requirements not be shown please ask for a separate quotation.  
 PROTEC products and specifications are subject to improvement and change without notice.